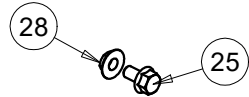
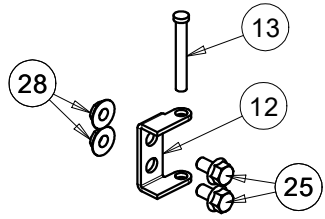


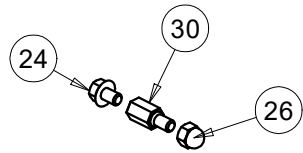
FISSAGGIO MONTANTI



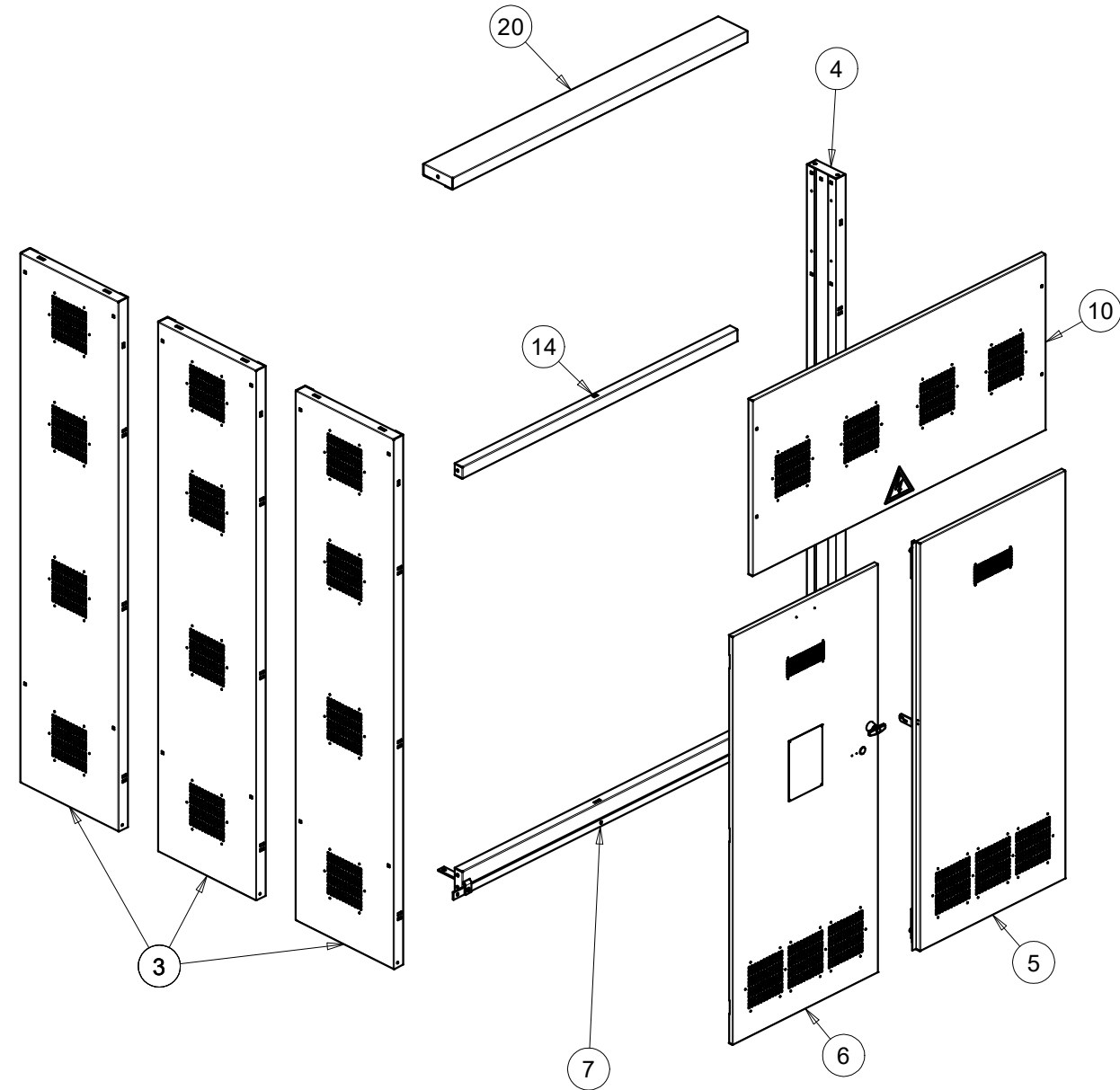
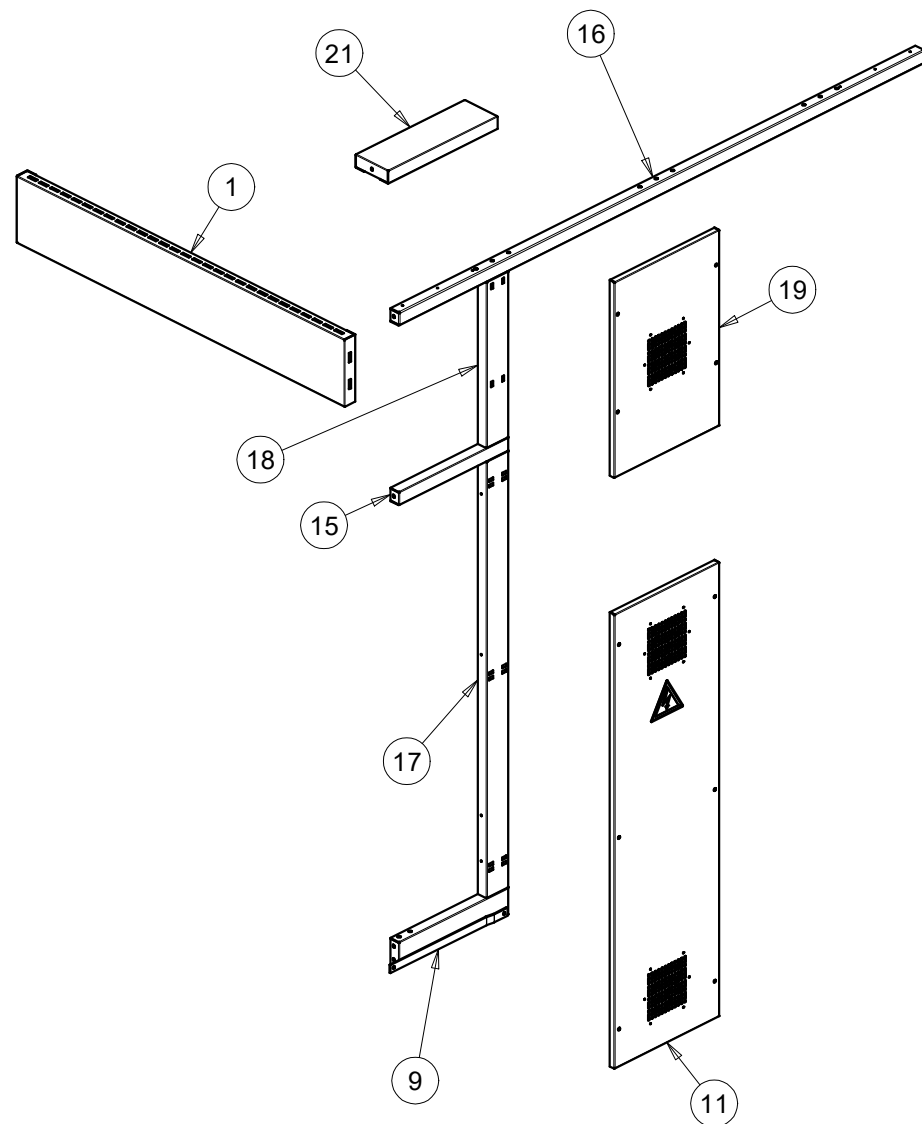
FISSAGGIO STRUTTURA ESTERNA



CERNIERA PER PORTE



FISSAGGIO PANNELLO ANTERIORE



GENERAL TOLERANCES UNI ISO 22768		Materiale / Sezione / Spessore :		Material / Section / Thickness :	
Linear Dim. / Angles :	<input checked="" type="checkbox"/> m <input checked="" type="checkbox"/> K	Class	Finitura :		Part. Critico : NO
Geometric Tolerances :	<input checked="" type="checkbox"/> K <input checked="" type="checkbox"/> K	Class	Finish :		Critical Part :
Stato Superfici :	3.2 (<input checked="" type="checkbox"/>)		Tratt. Termico :		Scala : 1:25
Surfaces State :			Heat Treatm. :		Scale : 1:25
Projection Method	<input checked="" type="checkbox"/> <input checked="" type="checkbox"/>		Descrizione / Description :		Rilascio : FOR MANUFACTURING
UNI EN ISO 5456-2 :			SCHEMA DI MONTAGGIO BOX		Release : FOR MANUFACTURING
All edges and corners derived by mechanical processing must be carefully deburred.			TRASFORMATORE (SOLO		Dis. : andrea.bonci 13/01/2023
The supplier is required to know the supply specifications of IMESA S.p.A. materials.			FRONTE E 1 FIANCO)		Peso kg : 0
 <p>IMESA ELECTRICAL ENGINEERING</p> <p><small>IMESA S.p.A. exclusively reserves every legal effects for the intellectual property of the drawing and the design contained in it, with clear prohibition of copy, disclosure by any means or support to any third party including the supplier, without the written authorization of the same.</small></p>					Sup. dm ² : 0
			<p>Gli sviluppi dei particolari in lamiera e delle barre di rame, indicate nel disegno, sono solo di riferimento per il reparto di produzione interna Imesa</p> <p>The unfolded sheet metal sketch, of copper bars or other components indicated in the technical drawings, are only for Imesa internal production department</p>		Codice / Code :
			01TR300000		0
			1/3		

LEGENDA

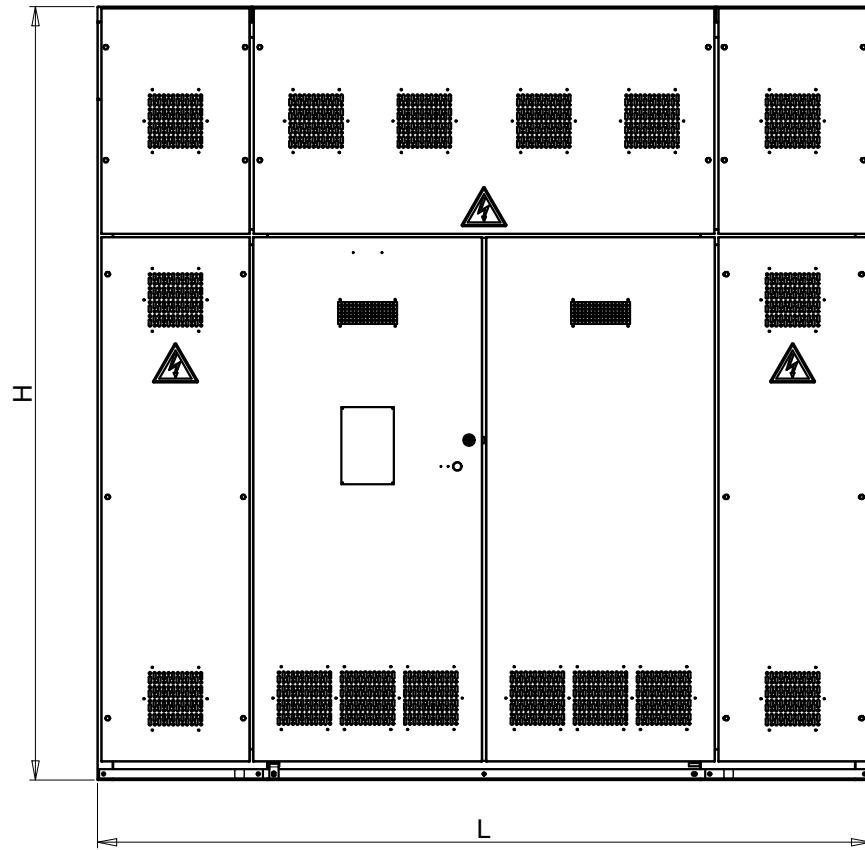
xx PARTICOLARI NECESSARI PER SOLI BOX TRASFORMATORE DI LARGHEZZA 2500 mm

	MP0404198	DISTANZIATORE IN METALLO ESAG. FILET. INTER/ESTER MAS-FEM M8-M8 L.20MM
	MP0403809	DADI IN GABBIA M6 (1,8-2,6) Q 9,5
28	MP0402386	DADI ESAGON. FLANGIATI C/FLANGIA ZIGRINATA PG 6S M8 ZINC BIAN DIN 6923
27	MP0402385	DADI ESAGONALI FLANGIATI C/FLANGIA ZIGRINATA PG 6S M6 ZINC BIAN DIN 6923
26	MP0402374	DADI ESAGONALI CIECHI C/CALOTTA SFERICA PG 6S M8 ZINCATO BIANC 5721-1587
25	MP0400772	VITI TESTA ESAG. INT. FILET. C/FLANGIA PG 8.8 M8X16 F/ZN BIANCA DIN 6921
24	MP0400769	VITI TESTA ESAG. INT. FILET. C/FLANGIA PG 8.8 M8X12 F/ZN BIANCA DIN 6921
23	MP0400768	VITI TESTA ESAG. INT. FILET C/FLANG PG 8.8 M6X16 F/ZN BIANCA ZIGR DIN6921
22	MP0350096	TRECCIA RAME ROSSO 16MMQ L.INTER=200MM D.FORO=8,5MM L.TOT=220MM LAM STA
21	890__Z	TETTO PER BOX TRAFI CON SOLO FRONTE
20	890__Z	TETTO PER BOX TRAFI CON SOLO FRONTE
19	879__	PANNELLO ANTERIORE DA ___ PER ___
18	877__Z	MONTANTE ANTERIORE E POSTERIORE DA ___ PER 100
17	877__Z	MONTANTE ANTERIORE DA ___ PER 100
16	865__Z	TRAVERSA ANTERIORE E POSTERIORE SUPERIORE DA ___ PER 50
15	864__Z	TRAVERSA ANTERIORE INTERMEDIA DA ___ PER 50
14	864__Z	TRAVERSA ANTERIORE INTERMEDIA DA ___ PER 50
13	7821	PERNO TONDO DA 55 PER 7 CON TESTA
12	7811Z	CERNIERA DA 50 PER 18
11	763__	ASSIEME PANNELLO ANTERIORE DA 1695 PER ___
10	762__	ASSIEME PANNELLO ANTERIORE DA ___ PER ___
9	761__S	ASSIEME TRAVERSA ANTERIORE INFERIORE DA ___ PER 100 SINISTRA
8	761__D	ASSIEME TRAVERSA ANTERIORE INFERIORE DA ___ PER 100 DESTRA
7	761__	ASSIEME TRAVERSA ANTERIORE INFERIORE DA ___ PER 100
6	760__S	ASSIEME PORTA DA ___ PER 1695 SINISTRA
5	760__D	ASSIEME PORTA DA ___ PER 1695 DESTRA
4	6905Z	FIANCO PER BOX CON SOLO FRONTE
3	690__Z	FIANCO DA 2200 PER ___
2	69018Z	FIANCO DA 250 PER 150
1	690__Z	FIANCO DA 250 PER ___

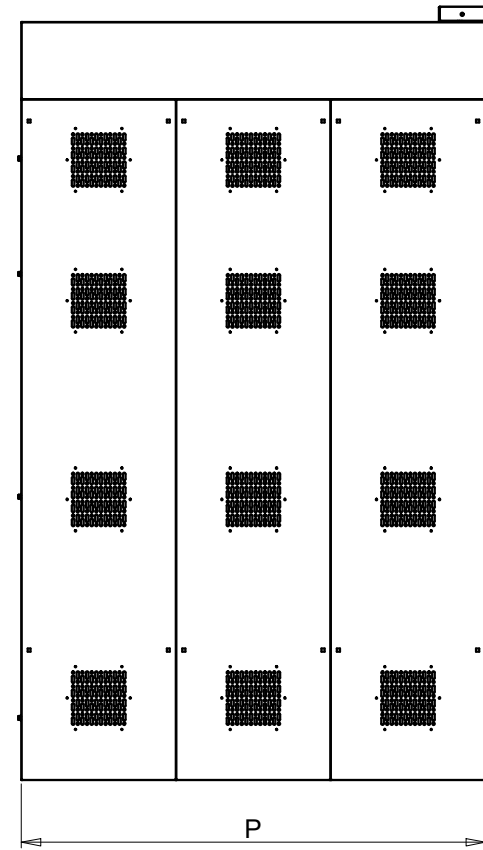
Pos.	Codice	Descrizione
------	--------	-------------

GENERAL TOLERANCES UNI ISO 22768		Materiale / Sezione / Spessore : Material / Section / Thickness :	
Linear Dim. / Angles :		Finitura : Finish :	Part. Critico : Critical Part : NO
Geometric Tolerances :		Tratt. Termico : Heat Treatm. :	Scala : Scale : 1:25
Stato Superfici : Surfaces State :	3.2 / (√)	Descrizione / Description : SCHEMA DI MONTAGGIO BOX TRASFORMATORE (SOLO FRONTE E 1 FIANCO)	Rilascio : Release : FOR MANUFACTURING
Projection Method UNI EN ISO 5456-2 :		Dis. : Drw. : andrea.bonci	Formato : Size : A3
All edges and corners derived by mechanical processing must be carefully deburred. The supplier is required to know the supply specifications of IMESA S.p.A. materials.		13/01/2023	Peso kg : Weight : 0
		13/01/2023	Sup. dm ² : Surf : 0
Gli sviluppi dei particolari in lamiera e delle barre di rame, indicate nel disegno, sono solo di riferimento per il reparto di produzione interna Imesa The unfolded sheet metal sketch, of copper bars or other components indicated in the technical drawings, are only for Imesa internal production department			
Codice / Code :		Rev. :	Fo. / Sh. :
01TR300000		0	2/3

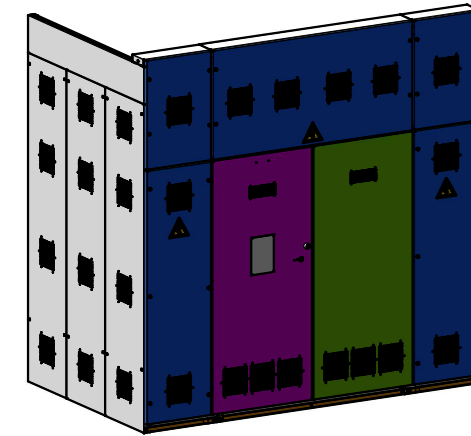
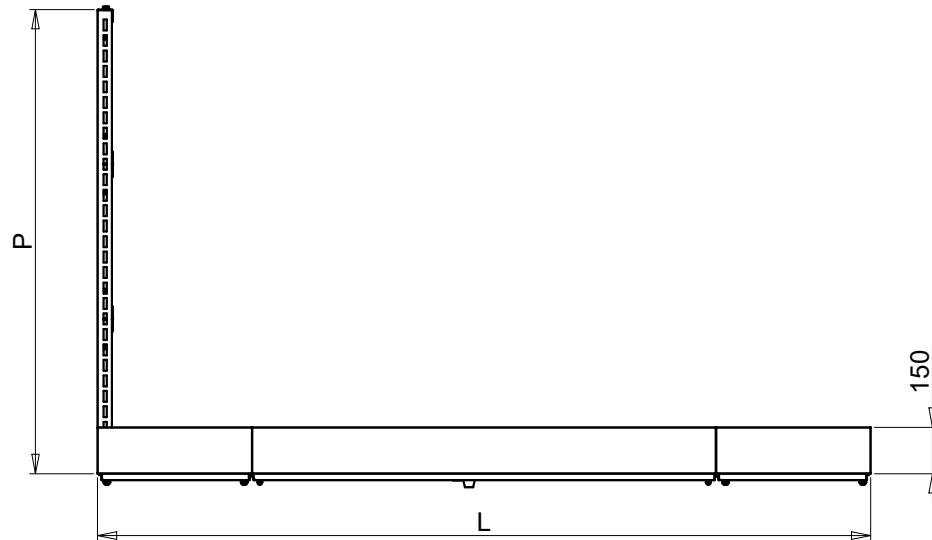
FRONTE



LATO



TETTO



GENERAL TOLERANCES UNI ISO 22768		Materiale / Sezione / Spessore :		Material / Section / Thickness :	
Linear Dim. / Angles :	$\begin{matrix} \times & m & \times \\ \times & K & \times \end{matrix}$	Class	Finitura :	Part. Critico : NO	
Geometric Tolerances :	$\begin{matrix} \times & m & \times \\ \times & K & \times \end{matrix}$	Class	Finish :	Critical Part :	
Stato Superfici :	3.2 (∇)		Tratt. Termico :	Scala : 1:25	
Surfaces State :	∇ (∇)		Heat Treatm. :	Scale :	
Projection Method	$\begin{matrix} \triangle & \oplus \\ \triangle & \oplus \end{matrix}$		Descrizione / Description :	Rilascio :	Formato :
UNI EN ISO 5456-2 :			SCHEMA DI MONTAGGIO BOX TRASFORMATORE (SOLO FRONTE E 1 FIANCO)	Release :	Size :
All edges and corners derived by mechanical processing must be carefully deburred.				FOR MANUFACTURING	A3
The supplier is required to know the supply specifications of IMESA S.p.A. materials.				Dis. :	Peso kg :
				andrea.bonci	Weight :
				13/01/2023	0
				Contr. :	Sup. dm ² :
				Sigismondi P.	Surf :
				13/01/2023	0
					
 ELECTRICAL ENGINEERING <small>IMESA S.p.A. exclusively reserves every legal effects for the intellectual property of the drawing and the design contained in it, with clear prohibition of copy, disclosure by any means or support to any third party including the supplier, without the written authorization of the same.</small>			Gli sviluppi dei particolari in lamiera e delle barre di rame, indicate nel disegno, sono solo di riferimento per il reparto di produzione interna Imesa		Codice / Code :
			The unfolded sheet metal sketch, of copper bars or other components indicated in the technical drawings, are only for Imesa internal production department		Rev. :
			01TR300000		0
			3/3		